

**8 FLOORS**  
*with connecting ramps  
and 3 lifts for  
accessibility*

**CENTRAL  
CAFE**  
*with smaller outlets  
around the site*

**SKY  
GARDENS**

**25-METER  
INDOOR  
POOL**  
*with 6 lanes*

**15  
STUDENTS**  
*involved in the design  
of green spaces and  
learning environments*

**INDOOR &  
OUTDOOR**  
*basketball courts  
and sports hall*

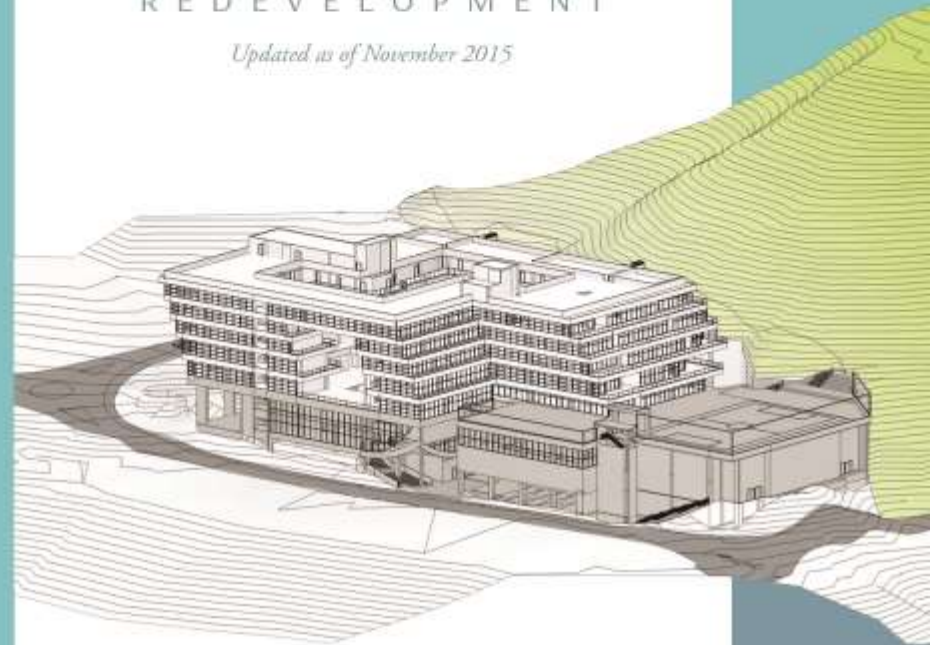
**2017**  
SEPTEMBER  
*construction starts on  
the new building*

**2021**  
AUGUST  
*students move into the  
new school*



## ISLAND SCHOOL REDEVELOPMENT

*Updated as of November 2015*



Built over eight floors, the new school will include all the things you would expect of a 21st century school on a world stage. Planned facilities include performing arts centre, an indoor swimming pool, a sports hall, modern laboratories, innovative classrooms and creative studios.

Apart from a private car park, there will also be a designated car park for the school buses so pick-up and drop-off will be safer and away from the road.

Student input into the design of the new building is vital. Senior staff have been asking students for their ideas and feedback on what makes a good learning environment.

[HTTP://ISREDEVELOPMENT.WORDPRESS.COM](http://isredevelopment.wordpress.com)



# ISLAND SCHOOL DECANT

*Updated as of November 2015*

## *Overview*

---

Our two decant sites designated by the Education Bureau are in Shatin Wai and Tai Wai. Each site will accommodate 600 students. We will split years 7, 8, 12 and 13 on one site and years 9-11 on the other. Both sites have a similar size and layout. It is anticipated that we will be occupying these sites for three to four academic years.

We are committed to ensuring a continuity of quality teaching and learning and maintaining Island School's unique ethos during the decanting period.

---

## *Staff*

---

The move to two separate sites will probably mean we have to recruit more teaching and non-teaching staff. We are currently calculating our staffing needs. To create a stable environment on both campuses, we aim to minimise staff movement between the two sites. Student wellbeing and academic success are our chief concerns when planning staffing for the temporary relocation period.

---

## *Plans*

---

Detailed plans reflect the need to address the three most vital issues – student wellbeing, the quality of education, and staff wellbeing.

The refurbishment plans were drawn up in consultation with staff to ensure that all classrooms and learning environments have the facilities to deliver a quality education, considering everything from visual display screens in classrooms to storage spaces in the laboratories. This means we will significantly enhance the decant teaching facilities to a level much higher than at the current Island School.

---

## *Travel*

---

All the possible travel options are being considered and students and parents will be a part of the decision making process. The average travel time by car to each site from Central is around 25 minutes depending on the site and traffic. From Central Station, it is 30 minutes to Tai Wai Station and 38 minutes to Shatin Wai Station. Both sites are a few minutes walk from the MTR stations.

---



*NB: The information in this document may be subject to change if we encounter situations or decisions that are out of our control.*